



Glovers Hill Court | Rugeley | WS15 1BF

Offers In The Region Of £150,000



Summary

** NO CHAIN ** IDEAL FOR FIRST TIME BUYERS ** FINISHED TO A HIGH STANDARD ** CLOSE TO AMENITIES ** OPEN PLAN LIVING KITCHEN ** TWO BEDROOMS ** ENSUITE ** BATHROOM ** ALLOCATED PARKING SPACE ** VIEWING ADVISED **

WEBBS ESTATE AGENTS are pleased to market this well presented two-bedroom first floor apartment, finished to a high standard throughout and ideally suited to first time buyers, professionals or investors alike. Positioned in a popular area of Brereton on Glovers Hill Court, this superb home enjoys a fantastic location close to amenities, excellent transport links and the beautiful surroundings of Cannock Chase.

The accommodation briefly comprises a welcoming entrance hallway leading into a spacious open plan kitchen, dining and living area, creating the perfect space for both relaxing and entertaining. The living room benefits from attractive views overlooking Brereton Park, providing a pleasant outlook and an abundance of natural light.

Key Features

- NO CHAIN
- FINISHED TO A HIGH STANDARD
- OPEN PLAN LIVING KITCHEN
- ENSUITE
- ALLOCATED PARKING SPACE
- IDEAL FOR FIRST TIME BUYERS
- CLOSE TO AMENITIES
- TWO BEDROOMS
- BATHROOM
- VIEWING ADVISED

Rooms and Dimensions

Hallway

Kitchen Living Room

16'9" x 14'11" (5.13 x 4.55)

Bedroom 1

10'1" x 10'2" (3.09 x 3.11)

Ensuite

6'6" x 4'0" (1.99 x 1.23)

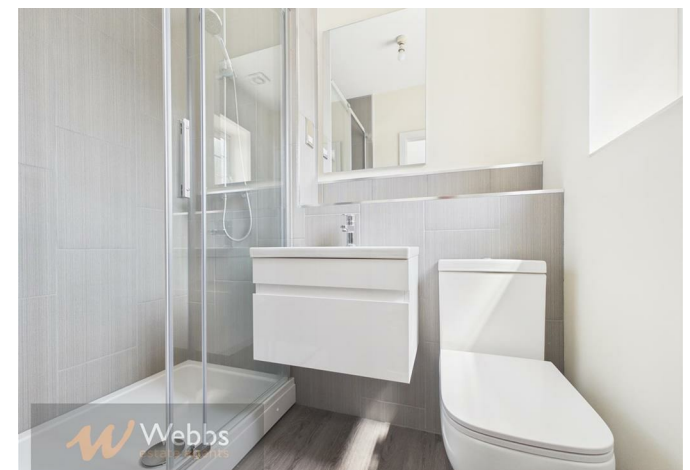
Bedroom 2

12'2" x 11'9" (3.72 x 3.60)

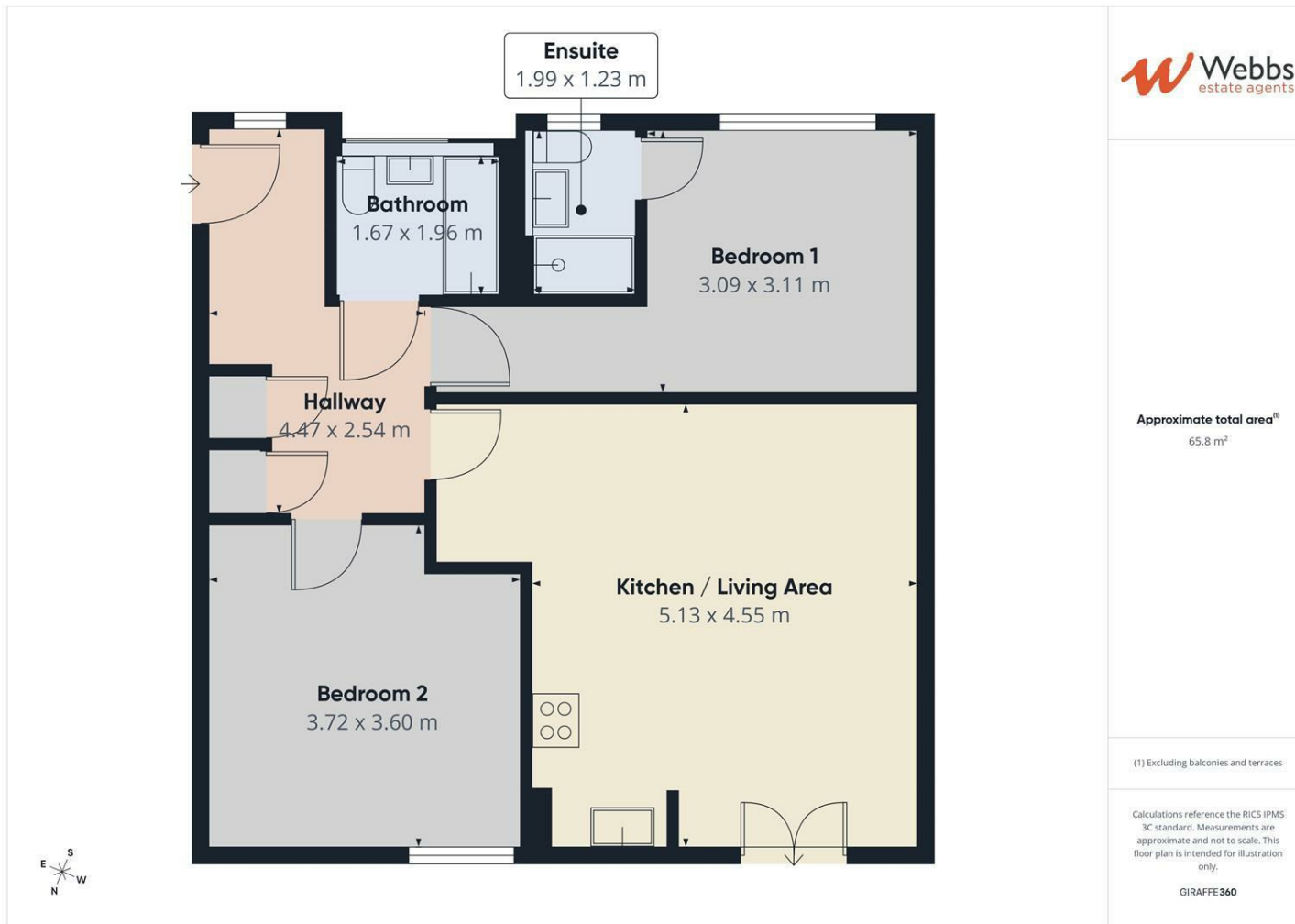
Bathroom

5'5" x 6'5" (1.67 x 1.96)

Identification Checks (R)







Webbs Estate Agents - endeavour to maintain accurate depictions of properties in Virtual Tours, Floor Plans and descriptions, however, these are intended only as a guide and purchasers must satisfy themselves by personal inspection.

